



Inside Wiring - Underground Cabling and Locating - Aerial Cable Placement - Tree Care - Lighting





Mission

Jameson is committed to consistently providing world class quality products and service to our customers. A leader in technology and innovation, we are dedicated to creating advanced solutions for our customers and have been doing so since 1956.

A Market Leader In

Telecommunications - Utilities - Electrical - Tree Care - Mining - Construction - Military

Core Purpose

The development, manufacture, and continuous improvement of world class products to better serve our customers.

Distinction

Understanding our customers' work environment and challenges allows us to develop solution-based products that perform safely and effectively. Commitment to our customers drives us to continually improve our products and service.



Jameson Corporate Headquarters

Notice

The information in this catalog is effective May 2015 and supersedes all previous catalogs. Since product improvement is a continual process at Jameson, specifications are subject to change without notice.

Patents

Hand-Held Fluorescent Light with Shock Absorbing Bulb Socket	5,860,730
Scissors (Design)	D445,010
Scissor Handle (Design)	D445,324
Retrofit Handle Attachment for Scissors	6,272,754
Portable Reduced Emissions Work Light	7,712,916 6,964,495
Task Light	D579,605
Task Light	D590,987
Task Light	D602,197

Patents Pending

Portable LED Tube Light
Method And Device For Tapping And Tracing A Conduit
Aerial Sheave

Trademarks

Exostar®
Safe-Stik®
Handi-Light®
PAXLight®
Buddy® System
Stubby Light®
2nd MAN®
Jameson®
Data Lynx™
Easy Rider™
Versa™ Block
Duct Hunter™
Live Tracer™
Cero®
X-D Lock®

Any unauthorized use of these trademarks without the express written consent of Jameson is strictly prohibited.

Inside Wiring

Buddy® Fish Tapes	2-3
Microduct Fisher	4
Flexi-Magnet	4
2nd Man Cable Pulley	5
Glow Fish Rods	6-7
Splicer Scissors and Knives	8-10

Underground Cabling and Locating

Buddy® Rodders	11-15
Duct Hunter™ Traceable Rodders	16-18
Live Tracer - Water	19-20
Live Tracer - Gas	21-22
Cable and Pipe Locators	23
Sonde & Adapters	24

Aerial Cable Placement Tools

Aerial Buddy Fiber Optic Sheave	25
Corner Blocks and Pole Mount Brackets	26
Stringing and Overlash Blocks	27
Telescoping Measuring Poles	28

Aerial Bucket and Boom Tool Holders

Bucket and Boom Tool Holders	29-31
Canvas Tool Bags	32

Fiberglass Poles and Lay Up Sticks

Poles Overview	33-34
JE Foam Core	35
FG Hollow Core	35
BL Lightweight Poles	36
LS Landscaper	36
Telescoping Poles	37

Tree Care - Pole Tools and Hand Tools

Pruners	38-39
Pole Saws	40
Saw Blades	41
Hand Saws	42
Tree Trimming Packages	43
Pole Accessories	44-45

Lighting

Handheld Portable Work Lights	46-48
Stringable Shelter Lights	48
Tripod Wide Area Light	49
ExoStar Area Light	50
Cero® LED Lights	51

Parts

Replacement Parts	52-53
-------------------	-------



1/8"
OD ROD
.080" Core

Inside Wiring In Occupied Conduit As Small As 1/2"

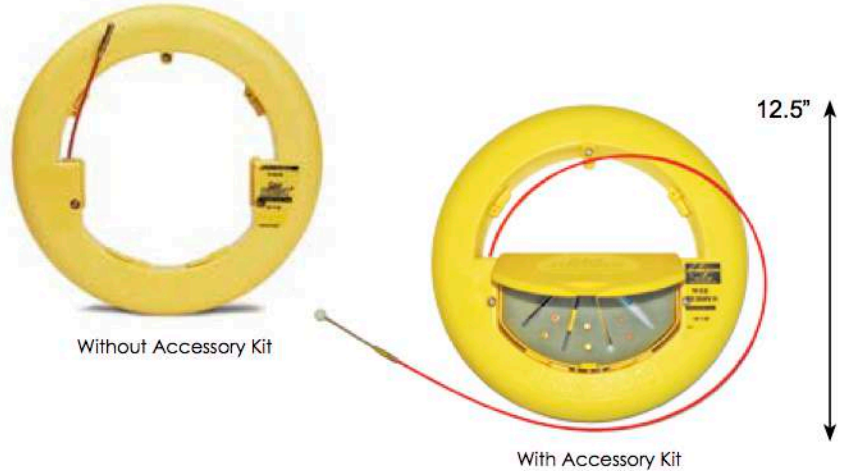
The Wee Buddy's round rod slides easily over existing wires, especially at bends, and has a smooth, non-binding payout and return to canister.

Easy grip design allows for more efficient pushing and pulling when fishing telecom, voice, data or electrical conduit.

Canister features snap-on accessory kit.

- Recommended Conduit: 1/2"+
- Bend Radius: 1-1/2"
- Pull/Tensile Strength: 200-lb
Strength rating of rod/end ferrule interface. Actual fiberglass rod has higher ultimate tensile strength
- Available With or Without Accessory Kit
- Dimensions: 12.5" Diameter x 2"

Part Number	Wee Buddy®
8-18-50	50' X 1/8" Wee Buddy
8-18-50K	50' X 1/8" Wee Buddy with Kit
8-18-100	100' X 1/8" Wee Buddy
8-18-100K	100' X 1/8" Wee Buddy with Kit
8-18-150	150' X 1/8" Wee Buddy
8-18-150K	150' X 1/8" Wee Buddy with Kit



Wee Buddy® Accessories



Accessory Kit
Snaps On Canister For Easy Access



Flexible Spring Leader
Guides Rod Through Bends,
Sweeps, Misalignments

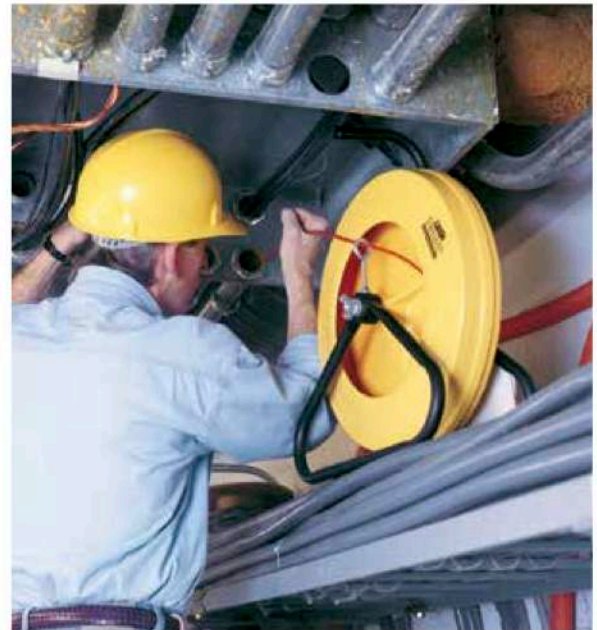
Part Number	Wee Buddy® Accessories	
8-160	Pulling Eye	Attaches to end fitting of rod for pull line attachment to rod
8-162	Large Spring Leader	Guides rod through bends, sweeps and misalignments
8-163	Small Spring Leader	
8-140	Splice Repair Kit	Splice Ferrule, Adhesive, Emery Cloth
8-146	End Ferrule Repair Kit	End Ferrule, Adhesive, Emery Cloth
8-18-AK	Accessory Kit	Small Leader, Large Leader, 2 Pulling Eyes, 2 Splice Ferrules, 2 End Ferrules, Adhesive, Emery Cloth, Plastic Case



Fishes Conduit 3/4" To 1-1/2"

Lightweight, portable unit for running inside and outside conduit drops; home drops from the hand-hole box to a building; and light pole and control wiring or walker ducts.

- Operates vertically or horizontally.
- Drag brake and safety feed eye to control payout.
- Bend Radius: 2.5"
- Pull/Tensile Strength: 300-lb
Strength rating of rod/end ferrule interface.
Actual fiberglass rod has higher ultimate tensile strength
- Accessory Kit included
- Dimensions: 22" x 17" x 7"



3/16"
OD ROD
.130" Core



Part Number	Little Buddy®
10-316-150	150' X 3/16" Little Buddy
10-316-200	200' X 3/16" Little Buddy
10-316-250	250' X 3/16" Little Buddy
10-316-300	300' X 3/16" Little Buddy



Part Number	Little Buddy® Accessories	
10-160	Pulling Eye	Attach to end fitting of rod for pull line attachment to rod
10-162	Flexible Leader w/Pull Eye	Guide rod through bends, sweeps and misalignments
10-163	Flexible Leader w/Ball Tip	
10-140	Splice Repair Kit	Splice Ferrule, Adhesive, Emery Cloth
10-146	End Ferrule Repair	End Ferrule, Adhesive, Emery Cloth
10-316-AK	Accessory Kit	2 Pulling Eyes, 2 Leaders, Splice Ferrule, 2 End Ferrules, Adhesive, Emery Cloth, Pouch

Little Buddy® Accessories



Accessory Kit
Attaches To Canister's Frame For Easy Access



Lightweight Canister With Easy-Grip Design
12.5" Diameter X 2" Width

3.2 mm
OD ROD
.080" Core



Microduct
FISHER™
For Fiber Microducts
BY JAMESON

For Fishing In Fiber Microduct

Jameson's Microduct Fisher features all fiberglass rod construction for safety and easy handling.

The low profile pulling eye is permanently mounted on the rod to move smoothly in fiber microducts as small as 6 mm, where traditional fish tapes are too large.

Smooth, round polymer jacket will not nick or scratch fiber or duct wall.

- 3.2 mm OD Fiberglass Rod
- 1.5" Bending Radius
- Permanent mount pulling eye
- Low profile tip moves easily in microduct

Microduct Fisher II

Reel models feature longer length rod and convenient carrying handle.

Available in Handheld or Stand Model

Part Number	Microduct Fisher
8-18-165MDR	165' X 1/8" Microduct Fisher
10-18-350MDR	300' X 1/8" Microduct Fisher II, Handheld
10-18-350MDRS	350' X 1/8" Microduct Fisher II, Stand
8-146MDR	Pulling Eye Repair Kit
8-140MDR	Splice Repair Kit



Reel Models
17" Diameter X 7" Width

Flexi-Magnet

Bendable retriever features a powerful magnetic tip that grabs chain inside wall to pull wire.

Includes 10' length of ball chain with ring to hold in place.

Part Number	Flexi-Magnet
7-07A	Flexi-Magnet Kit (Retriever and Ball Chain with Ring)



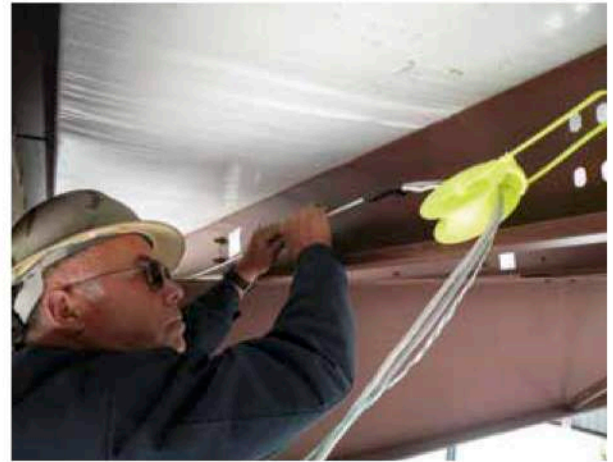


Now One Technician Can Do The Job Of Two!

The 2nd MAN™ Cable Pulley is designed to accommodate eight (8) four pair, Cat 5e, Cat 6, and fiber-optic cable.

With strategic placement, the 2nd MAN™ can increase efficiency and safety during installation.

It also helps preserve the cable's integrity during and after installation by maintaining proper bend radius and pulling force.



Cable Installation

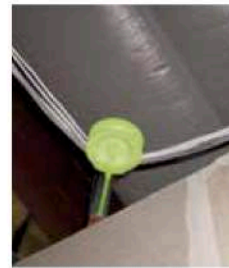
- Hang a 2nd MAN™ above drop ceiling to receive cable from supply side of pull.
- Hang a 2nd MAN™ at each horizontal turn, elevation change and up-and-down location.
- Use it to line up cable being pulled into a conduit; cable travels in a straight line between pulleys.
- Make a horizontal 90 degree turn (or any turn), eliminating the need to bring cable down through the ceiling, place it on the floor and then feed it back up through the ceiling to make the turn.

Cable Hanger

- Saves time by already being in place.
- Non-plenum for use in the appropriate air-handling space.
- Cost competitive with other cable hanger devices and a greater value because it is an installation tool that doubles as a hanger device.

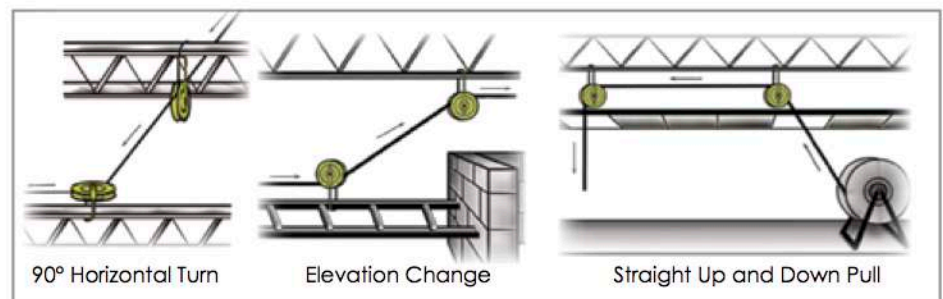
Protects Cable

- Protects cable by maintaining proper bend radius.
- Helps ensure recommended pulling force is not exceeded.
- Eliminates safety hazard of cable strung out on floor and potential cable damage.
- Friction on the cable is virtually eliminated because cable does not slide across the wheel of the pulley - wheel turns with the cable. The 2nd MAN™ eliminates corner drag.



Material: Injection Molded Nylon (Non-Plenum)
 Weight: 1/4 lb.
 Load Capacity: 30 lbs.
 Wheel Diameter: 4" outside and 2.3" inside
 Wheel Width: 1.13" inside
 Length from axle pin to loop in strap 7.25"
 Length from bottom of wheel to loop in strap 9.25"

Part Number	
3241-2R	2nd MAN Cable Pulley - Two Pack
3241-6	2nd MAN Cable Pulley - Six Pack



Glow Rod

Non-Conductive Fiberglass Rods For Wiring

With our proprietary luminescent resin, Jameson is the original manufacturer of fiberglass glow rods.

These non-conductive rods are perfect for drop ceilings, attics, floors, walls, and crawl spaces. Their high strength and flexibility handle turns easily without breaking.

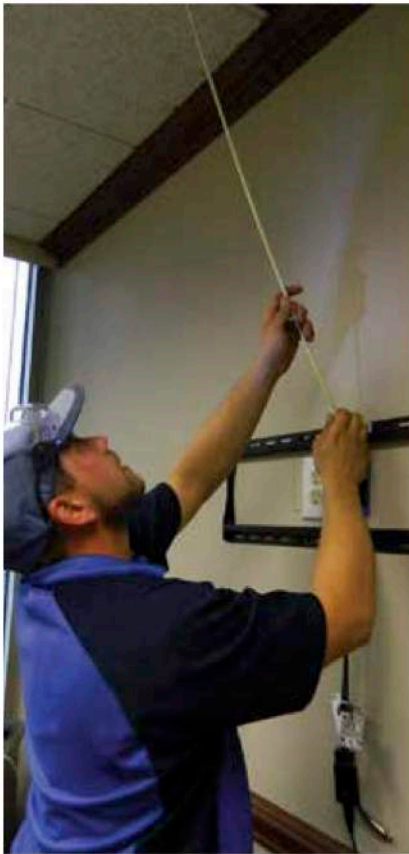
Designed for maximum versatility, threaded ferrules make it possible to customize rod length to any job and a variety of accessories make it easier to handle any wiring situation.

What Size Do You Need?

Flexibility increases as rod diameter decreases:

- 1/4" for long spans requiring greater rigidity
- 3/16" for short spans or in limited space
- 5/32" for making tight turns

Featuring the same size ferrule threads (#8-32), different diameter rods can be used together in any combination for ultimate on-the-job customization.



1/4" Diameter

Most Rigid Glow Rod;
Used For Long Spans

Minimum Bend Radius: 6"

Tensile/Pull Strength: 750 lbs

Part Number	Total Rod Length	Package Length	1/4" Glow Rod Kits
7-36-23T	24'	6'	Three 6' X 1/4" Rods, Two 3' X 1/4" Rods One Bullet Nose with Eyelet, One Hook
7-63T	18'	3'	Six 3' X 1/4" Rods One Bullet Nose with Eyelet, One Hook
7-34T	12'	4'	Three 4' X 1/4" Rods One Bullet Nose with Eyelet, One Hook
7-6	6'	*	One 6' X 1/4" Replacement Rod with Male and Female Ferrules

* Single rods are shipped with hanging tag, not in plastic kit tube



3/16" Diameter

More Flexible For Short Runs
Or Use In Limited Space

Minimum Bend Radius: 4"

Tensile/Pull Strength: 500 lbs

Part Number	Total Rod Length	Package Length	3/16" Glow Rod Kits
7S-45T	20'	5'	Four 5' X 3/16" Rods One Bullet Nose with Eyelet, One Hook
7S-718T	10.5'	18"	Seven 18" X 3/16" Rods One Bullet Nose with Eyelet, One Hook
7S-5	5'	*	One 5' X 3/16" Replacement Rod with Male and Female Ferrules

* Single rods shipped with hanging tag, not in plastic kit tube



5/32" Diameter

Part Number	Total Rod Length	Package Length	5/32" Glow Rod Kits
7SS-36T	18'	6'	Three 6' X 5/32" Rods One Bullet Nose with Eyelet, One Hook
7SS-6	6'	*	One 6' X 5/32" Rod with Permanently Mounted Bullet Nose with Eyelet On Each End of Rod
			* Single rods shipped with hanging tag, not in clear plastic kit tube

Smallest Diameter Offers Extreme Flexibility With High Strength

Ideal For Security and Alarm, Home Theater, CATV, Satellite Installation

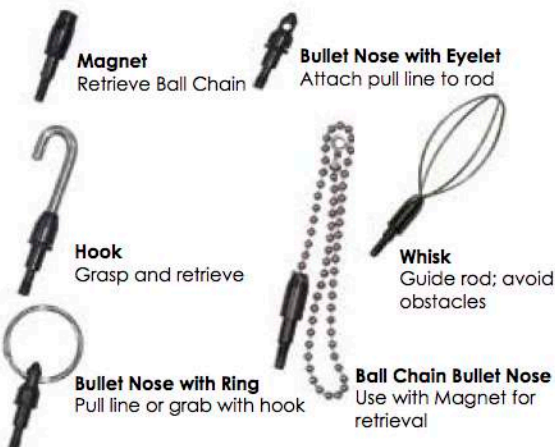
Minimum Bend Radius: 3.5"
Tensile/Pull Strength: 300 lbs

Combo Kits

Part Number	Total Rod Length	Package Length	Installer's Kit
7-8-1K	35'	6'	Two 1/4" X 5' Rods, Two 1/4" X 2.5' Rods, Four 3/16" X 5' Rods Two Bullet Nose with Eyelet, Two Hooks, One Whisk
Part Number	Total Rod Length	Package Length	Deluxe Kit
7S-65K	30'	6'	Six 3/16" X 5' Rods One Bullet Nose with Eyelet, One Hook, One Whisk, One Ball Chain Bullet Nose
Part Number	Total Rod Length	Package Length	Versa Kit
7-8-VK	34'	6'	Two 1/4" X 6' Rods, Two 3/16" X 5' Rods, One 5/32" X 6' Rod One 5/32" X 6' Rod - Permanently Mounted Bullet Eye On Each End One Hook, One Whisk

Kits Include A Variety Of Rod Sizes And Accessories For Greater Versatility On The Job

Glow Rod Accessories



Part Number	Glow Rod Accessories
7-00A	Bullet Nose with Eyelet
7-01A	Hook
7-02A	Bullet Nose with Ring
7-03A	Whisk
7-04A	Ball Chain Bullet Nose
7-05A	Magnet
7-06AK	Accessory Kit

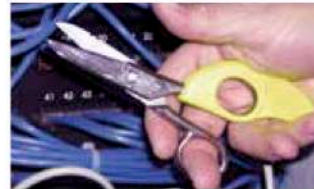




Splicer Snips and Knives

Jameson remains the leading provider of splicer snips and knives to the telecommunications market due to a commitment to the highest standards of durability, performance, and quality.

We use a cryogenic (ice tempering) process commonly used in the manufacture of surgical instruments. This significantly improves wear resistance - indispensable when working with fiber optic strands and copper wire.



Splicer Snips

Precision ground for consistent quality, Jameson snips are ideal for telecommunication, electronic and electrical wiring jobs.

Snip Grip® Ergonomic Handle

Designed to increase cutting leverage while reducing hand and wrist fatigue. Sold separately or with Jameson snips.

Splicer Skinning Knife

Straight style blade is molded into an easy-grip polymer handle that remains pliable in subzero temperatures. Blade is 20-25% thicker than comparable models.



Part Number	Scissors Without Snip Grip®
32-21NS	Scissors with Notched & Serrated Blade
	Snip Grip®
32-40	Snip Grip® Handle
32-41NS	Notched, Serrated Scissors with Snip Grip®
	Skinning Knife
32-24E	Skinning Knife - Ergonomic Handle
32-24J	Skinning Knife
32-25	Leather Knife Pouch; Slotted Belt Loop
32-24P	Skinning Knife with Slotted Loop Pouch

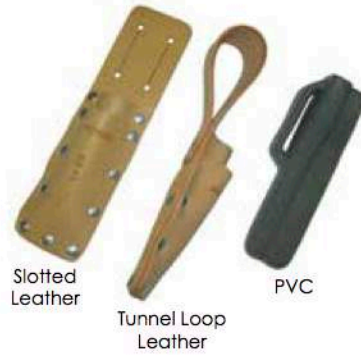
Part Number	Tool Pouches
32-11T	Tunnel Loop Leather Pouch for Scissors and Knife
32-11	Slotted Leather Pouch for Scissors and Knife
32-12	Slotted Leather Pouch for Scissors
32-25	Slotted Leather Pouch for Knife
32-16T	Black PVC Pouch for Scissors, Snip Grip® and Knife
32-30	Adjustable web belt for tool pouches
	Splicer Tools and Pouch Sets without Snip Grip®
32-24P	Slotted Pouch (32-25) with Knife
32-22NS	Slotted Pouch (32-11), Knife & Scissors (32-21NS)
32-23NS	Tunnel Pouch (32-11T), Knife & Scissors (32-21NS)
	Splicer Tools and Pouch Sets with Snip Grip®
32-42NS	Slotted Pouch (32-11), Knife, Snip Grip® & Scissors (32-21NS)
32-43NS	Tunnel Pouch (32-11T), Knife, Snip Grip® & Scissors (32-21NS)
32-16NS	PVC Pouch, Knife, Snip Grip® & Scissors (32-21NS)

Splicer Tool Pouches

Our line of leather and PVC belt pouches keep splicing tools close at hand.

Leather pouches are reinforced with steel rivets for durability. Available with slotted openings or tunnel loop to slide on belt.

Black PVC pouches will not split or tear with age and remain flexible, even in cold weather.



32-11T Tunnel Loop Leather Pouch with Snip Grip®, Scissors and Knife

32-11 Slotted Leather Pouch with Snip Grip®, Scissors, Knife



32-12 Slotted Leather Pouch with Scissors



32-30 Adjustable Belt for Tool Pouches



PVC Pouch with Snip Grip® and Scissors

PVC Pouch with Snip Grip®, Scissors and Knife

Scissors and Knife Sharpener

Compact sharpener works on scissors and knives. Easy grip handle and finger stop for safety.



32-50	Scissors and Knife Sharpener
-------	------------------------------

Fiber Optic Shears

Stainless steel alloy blades cut Kevlar® fibers, soft cable, wire insulation, tape, cable ties and other materials. The serrated edge grips material, limiting slippage while cutting.

Ergonomic handles are made of a high strength fiberglass/ nylon blend.

Web belt pouch included.

Shears measure 5.5" with a 1.625" cutting length.



32-60	Fiber Optic Shears with Pouch
-------	-------------------------------

Hawkbill Skinning Knife

Designed to remove cable jackets in line work, Jameson's Hawkbill Skinning Knife is also a popular all-purpose knife.

Polished, high carbon steel blade is ice-tempered to maintain edge longer. The curved, double-edged blade easily cuts through cable jackets and insulation.

Features an ergonomic, cushioned handle with an expanded end to protect hand from slippage and a convenient built-in ring.

10" X 2"



Hawkbill Knives

Part Number	Description
32-70-C	Skinning Knife - Charcoal Handle
32-70-O	Skinning Knife - Orange Handle

Tri-Hole Fiber Optic Stripper

Jameson's fiber optic strippers feature 3 openings to handle typical fiber stripping jobs:

- Strip 1.6-3 mm fiber jacket to 600-900 micron buffer coating
- Strip 900 micron buffer coating to 250 micron coating
- Strip 250 micron cable to glass fiber

Strips without scratching or nicking glass fiber.



Fiber Stripper



Fiber Shear

Part Number	Description
32-FS-375	Tri-Hole Fiber Optic Strippers
32-60-375	Kit: Fiber Stripper and Fiber Shear in Leather Tunnel Loop Pouch

Can Wrench with Two Socket Sizes

Used to open telephone pedestal boxes and tighten binding post screws, Jameson's insulated Can Wrench has a high-visibility nylon handle with hardened alloy steel sockets. Thin walled sockets for access to tight places.

- 7/16" and 3/8" Sockets
- 1.25" Deep Socket Fits Over Long Binding Posts



Kit:
Can Wrench, Snips, Knife



Can Wrench

Part Number	Description
32-216C	Can Wrench Only, .31 lbs., 7-1/2" X 5/8"
32-16NS-216C	Kit: Can Wrench, Notched Serrated Snip with Snip Grip, Splicer Knife and Leather Tunnel Loop Pouch



Non-Conductive Fiberglass Conduit Rodders For Long Distance Cable Runs

Since 1980, Jameson's Buddy® System of rodders and fish tapes have evolved to become the most comprehensive in the industry.

Whether installing short run electrical wire or running long distance copper or fiber optic cable, Jameson has a Buddy® to handle the job for you.



The Jameson Fiberglass Advantage

- Fiberglass core is coated with high visibility polymer sheath to protect against rod abrasion and reduce friction.
- Round, flexible rod slides easily over wires in occupied conduit
- Exceptional bending strength for maneuvering tight turns
- Non-conductive and will not kink
- Accessories attach to fiberglass rod for greater versatility and easier fishing



	Rod Diameter	Rod Core	Lengths Available	Tensile/Pull Strength*	Bend Radius	Recommended Conduit	Usage
Easy Buddy®	1/4"	.197"	300' - 400'	400-lb	4"	1" to 2"	Rodding conduit into buildings
Good Buddy®	3/8"	.250"	300' - 400'	1,000-lb	7"	2" to 4"	Confined areas; manhole to riser, riser to riser, cable vaults
Good Buddy® II	3/8"	.250"	400' - 600'	1,000-lb	7"	2" to 4"	Longer runs; manhole to riser, riser to riser, cable vaults
Good Buddy® III	3/8"	.250"	300' - 400'	1,000-lb	7"	2" to 4"	Maximum portability; manhole to riser, riser to riser, cable vaults
Big Buddy®	1/2"	.375"	400' - 1,000'	1,000-lb	10"	4"+	Manhole to manhole or long run cable pulls
Mega Buddy®	1/2"	.375"	1,500'	800-lb	10"	4"+	Manhole to manhole or long run cable pulls

* Strength rating of rod/end ferrule interface. Actual fiberglass rod has higher ultimate tensile strength.

All Buddies® are shipped with End Ferrule and Pulling Eye

Custom rod lengths available for special applications



1/4"
OD ROD
.197" Core

Flexible 1/4" Rod For Tight Turns And Long Runs

Ideal for rodding or fishing conduit of 1-2" diameter. Lightweight frame and wheels make the unit fully portable. Features a drag brake to control pay out.

- 4" Bending Radius
- 400-lb Pull/Tensile Strength
- Includes End Ferrule and Pulling Eye
- Accessory Kit sold separately
- Dimensions: 28.5" x 24" x 11"

Part Number	Easy Buddy®
6-14-300M	300' X 1/4" Easy Buddy
6-14-400M	400' x 1/4" Easy Buddy
6-14-500M	500' x 1/4" Easy Buddy

Rod is marked in 5' increments. Add 'MM' to part number for metric measure (1m increments).

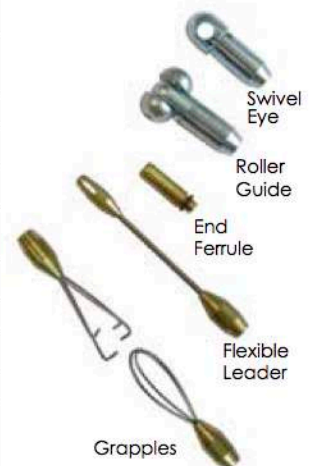


Easy Buddy® Accessories



Accessory Kit
Attaches to Rodder Frame
For Easy Access

Part Number	Accessories	
6-14-AK	Accessory Kit	Splice Ferrule, Pulling Eye, End Ferrule, Adhesive, Emery Cloth, Canvas Pouch
6-139	Swivel Eye	Attach pull line or grip to freely rotating eye
6-140	Splice Repair Kit	Splice Ferrule, Adhesive, Emery Cloth, Instructions
6-141	Roller Guide	Guide rod through bends, sweeps, misalignments, wires
6-143	Swivel Coupling	Connect two rods when single length is not long enough; provides rotation when pulling line, wire or rope.
6-146	End Ferrule Repair	End Ferrule, Adhesive, Emery Cloth, Instructions
6-148	Rod Grapple Set	Connect two rodders from opposite directions
6-160	Pulling Eye	Attach to end fitting of rod for pull line attachment to rod
6-162	Flexible Leader	Guide rod through bends, sweeps, misalignments
6-14-BAG	Zippered Bag	Protect Easy Buddy from moisture and UV rays when not in use and during transport
6-14-COV	Cover	





Rod Or Fish Conduit 2-4" In Diameter

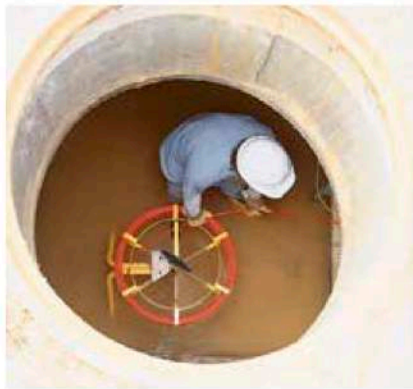
Jameson offers a comprehensive Good Buddy® family to meet various applications for 3/8" rod:

Manhole-to-riser, riser-to-riser, cable vaults and large conduit runs.

- 7" Bending Radius
- 1,000-lb Tensile/Pull Strength
- Accessory Kit, End Ferrule and Pulling Eye Included



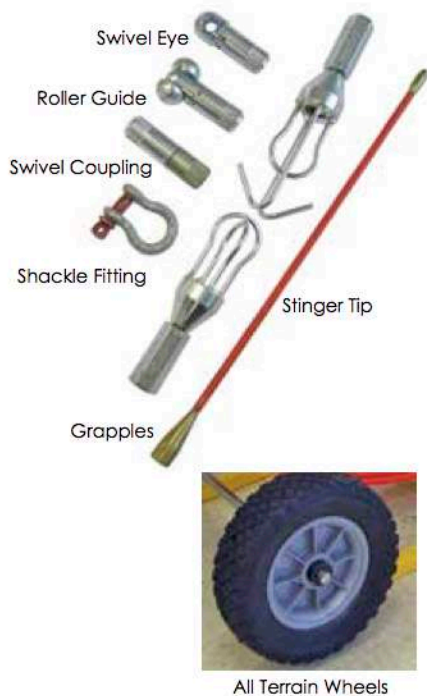
3/8"
OD ROD
.250" Core



See Next Page For All Good Buddy® Models

Part Number	Good Buddy® Rodders
9-25-300M	300' X 3/8" Good Buddy
9-25-400M	400' X 3/8" Good Buddy
11A-25-400M	400' X 3/8" Good Buddy II
11A-25-500M	500' X 3/8" Good Buddy II
11A-25-600M	600' X 3/8" Good Buddy II
9A-25-300M	300' X 3/8" Good Buddy III
9A-25-400M	400' X 3/8" Good Buddy III

All Good Buddy® conduit rodder models come standard with rod marked in 5' increments. Add 'MM' to part number for metric measure (1m increments).



Good Buddy® Accessories

Part Number	Accessories	
9-25-AK	Accessory Kit	End Ferrule, Splice Ferrule, Adhesive, Emery Cloth, Canvas Pouch
9-139	Swivel Eye	Attach pull line or grip to freely rotating eye
9-141	Roller Guide	Guides rod through bends, sweeps, misalignments, wires
11-142	Shackle Fitting	Use with Swivel Eye for larger pulling loop to attach Pulling Eye. Must use 11-139 Swivel Eye.
9-143	Swivel Coupling	Connect two rods when single length is not long enough; provides rotation when pulling line, wire or rope.
9-148	Rod Grapples	Connects two rodders from opposite directions
9-25-12ST	12" Stinger Tip	Guide rod through bends, sweeps, misalignments
9-25-24ST	24" Stinger Tip	
9-140	Splice Repair Kit	Splice Ferrule, Adhesive, Emery Cloth, Instructions
9-146	End Ferrule Repair	End Ferrule, Adhesive, Emery Cloth, Instructions
11A-AWK	AT Wheel Kit	Replacement All-Terrain Wheel Kit (2 wheels/axle) for Good Buddy II only





Detach or Fold Frame For Transport Into Confined Areas

- 300' and 400' lengths
- Folds to 10" width for carrying into manholes
- Reel detaches from frame for increased functionality in confined spaces.
- Frame handle for easier transport and handling
- Friction brake and safety roller feed
- Operates vertically or horizontally
- Accessory Kit Included

29"H x 29"L x 27"W (Folds to 10" Width)



Increased Rod Length For Longer Runs

- 400', 500' and 600' lengths
- Oversized wheels support weight of longer rod
- Frame handle and wheels for transport
- Friction brake and safety roller feed
- Operates vertically or horizontally
- Accessory Kit Included

39"H x 32"L x 18"W



Smaller Frame For Maximum Portability

- 300' and 400' lengths
- Wheels and frame handle for transport
- Slimmer frame than GB or GB II
- Friction brake and safety roller feed
- Operates vertically or horizontally
- Accessory Kit Included

32"H x 28"L x 13"W



Rod Or Fish Conduit 4" Or Larger

Heavy duty non-conductive rodder is ideal for manhole-to-manhole work or long-run cable pulls. With the ability to operate vertically or horizontally, the Big Buddy has the versatility to handle the toughest jobs.

- Drag brake and safety feed eye to control pay out.
- 10" Bending Radius
- 1,000- lb Pull/Tensile Strength
- Includes End Ferrule and Pulling Eye
- Accessory Kit sold separately
- Dimensions: 47.5" x 44" x 20"



1/2"
OD ROD
.375" Core



Part Number	Big Buddy®
11-38-400M	400' X 1/2" Big Buddy
11-38-500M	500' X 1/2" Big Buddy
11-38-600M	600' X 1/2" Big Buddy
11-38-800M	800' X 1/2" Big Buddy
11-38-1000M	1,000' X 1/2" Big Buddy
11-38-1500M	1,500' X 1/2" Mega Buddy

*Rod is marked in 5' increments.
Add 'MM' to part number for metric
measure (1m increments).*

Mega Buddy features 1,500'
Rod and All Terrain Wheels
for Longer Cable Pulls

Big Buddy® Accessories

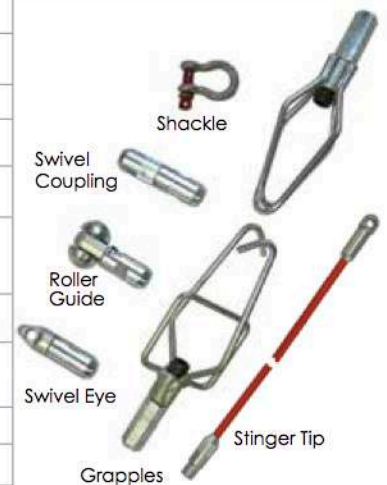


Repair Kit Attaches to Rodder Frame
for Easy Access



Replacement All Terrain Wheel

Part Number	Accessories	
11-38-RK	Repair Kit	2 Splice Ferrules, End Ferrule, Emery Cloth, Adhesive, Canvas Pouch
11-139	Swivel Eye	Attaches pull line to rod
11-141	Roller Guide	Guides rod around bends, sweeps, misalignments, wires
11-142	Shackle Fitting	Use with swivel eye for larger pulling loop to attach pulling eye
11-143	Swivel Coupling	Connects two rods when single length is not long enough; provides rotation when pulling line or wire
11-148	Rod Grapple Set	Connects two rodgers from opposite directions
11-25-6ST	6' Stinger Tip	Guides rod through bends, sweeps and misalignments
11-25-8ST	8' Stinger Tip	
11-140	Splice Repair Kit	Splice Ferrule, Adhesive, Emery Cloth
11-146	End Ferrule Repair	End Ferrule, Adhesive, Emery Cloth
11-AWK	Wheel Kit	All-Terrain Wheel Kit (2 wheels/axle) for Big and Mega Buddy





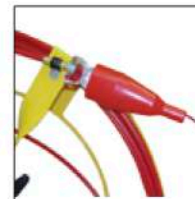
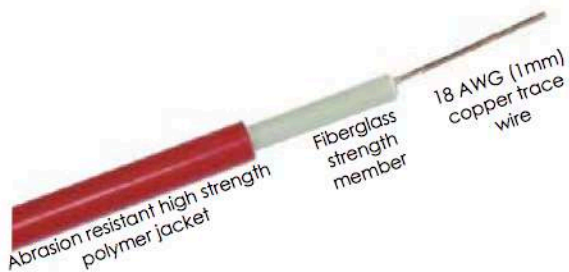
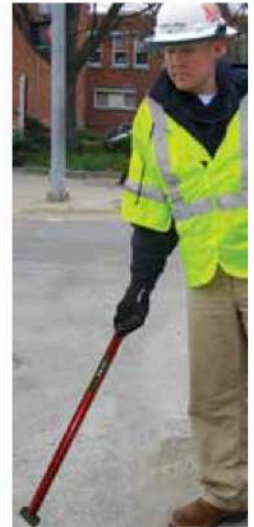
Trace Underground Pipe Without Digging

- Less Disruption To Roads And Landscapes
- Minimal Pavement Breakage, Excavation, Restoration

Connecting a signal transmitter to the Duct Hunter™ energizes the unit with a specific frequency. When the energized Duct Hunter™ rod is pushed into underground pipe, the signal radiates outward through the soil to the surface.

A signal receiver detects the frequency applied to the Duct Hunter™, allowing the entire buried utility pipe to be traced and marked continuously from above ground by one man without digging. Rod's ferrule attaches to sonde, roller guide or pulling eye

- Trace to depths up to 10'
- Locate sewer laterals to confirm no cross bore has occurred
- Locate ductile iron, plastic, tile or concrete pipe
- Accessory kit included
- Bend Radius: 5/16" Rod has 6" Bend; 7/16" Rod has 9" Bend
- Rigid frame and wheel construction

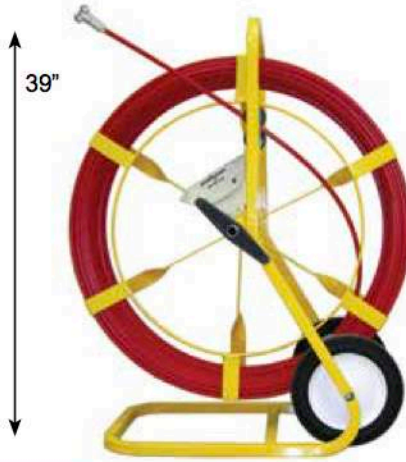


Attach alligator clip from standard field transmitter to Duct Hunter rod bolt. Attach the other transmitter clip to ground spike.

The copper wire inside rod is energized with an electromagnetic signal detectable above ground with a hand-held signal receiver.

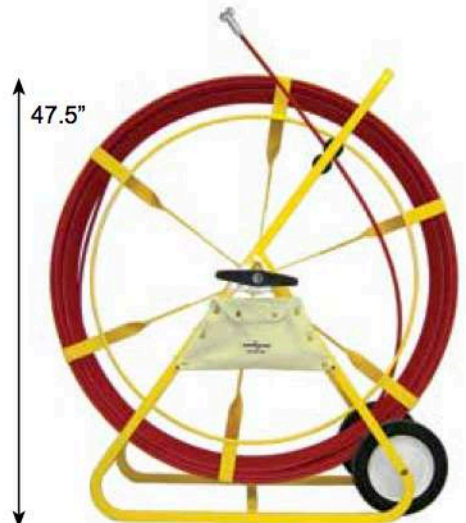


5/16" Rod
300'-400'
28.5" x 24" x 11"



5/16"
OD ROD

5/16" Rod
500'-800'
39" x 32" x 18"



7/16"
OD ROD

7/16" Rod
500'-1,000'
47.5" x 44" x 20"

Duct Hunter	Rod Diameter	Length	Recommended Conduit Size
12-516-300	5/16"	300'	2" - 4"
12-516-400	5/16"	400'	2" - 4"
12A-516-500	5/16"	500'	2" - 4"
12A-516-600	5/16"	600'	2" - 4"
12A-516-700	5/16"	700'	2" - 4"
12A-516-800	5/16"	800'	2" - 4"
13-716-400M-AWK *	7/16"	400'	4" or Larger
13-716-500	7/16"	500'	4" or Larger
13-716-600	7/16"	600'	4" or Larger
13-716-600M-AWK *	7/16"	600'	4" or Larger
13-716-800	7/16"	800'	4" or Larger
13-716-1000	7/16"	1000'	4" or Larger
13-716-1500	7/16"	1500'	4" or Larger

* With All Terrain Wheels
Male end ferrule thread 3/8"-16

Duct Hunter™ Accessories



Replacement All Terrain
Wheels



Accessory Kit

Fiberglass Stinger Tip

Flexible Leader

Roller Guide with Spring Adapter

7/16" Duct Hunter	5/16" Duct Hunter	Accessories	
13-716-AK	12-516-AK	Accessory Kit	Roller Guide, End Ferrule, Splice Ferrule, 2 Adhesive, 2 Emery Cloth, Canvas Pouch
9-141	9-141	Roller Guide	Guides rod through bends, sweeps, misalignments and wires; Increases contact with pipe on lead end of rod to improve overall signal strength
9-171	9-171	Roller Guide with Spring Adapter	Heavy duty spring permanently attached to swivel roller guide helps push rod past difficult bends or debris in pipe
12-162	12-162	Flexible Leader	Guides rod through bends, sweeps, misalignments
9-25-12ST	9-25-12ST	12" Fiberglass Stinger Tip	Guides rod through bends, sweeps and misalignments
9-25-24ST	9-25-24ST	24" Fiberglass Stinger Tip	
9-139	9-139	Swivel Eye	Attaches pull line to rod
13-146	12-146	End Ferrule Repair Kit	End Ferrule, Adhesive, Emery Cloth, Instructions
13-140	12-140	Splice Repair Kit	Splice Ferrule, Adhesive, Emery Cloth, Instructions
11-AWK	11-AWK	Wheel Kit	All-Terrain Wheel Kit (2 wheels/axle) - Does not fit 300'-400' Duct Hunter model

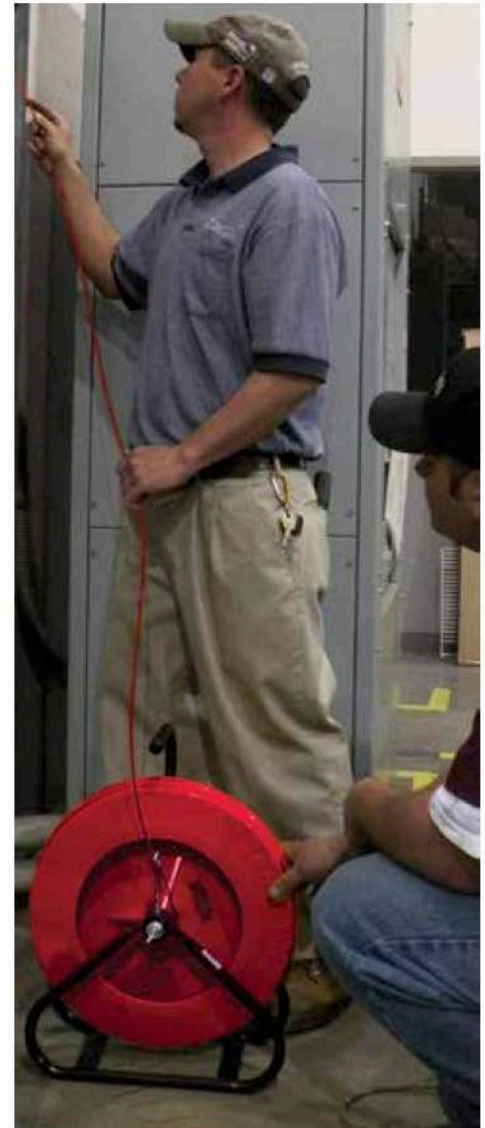


Trace Small Conduit or Pipes

Connecting a signal transmitter to the Duct Hunter™ energizes the unit with a specific frequency. When the energized Duct Hunter™ rod is pushed into pipe, the signal radiates outward to the surface.

A signal receiver detects the frequency applied to the Duct Hunter™, allowing the pipe to be traced inside walls, floors or underground.

- Locate Fiber Optic Cables In PVC Pipe Without Tracer Wire
- Fiber To The Home Applications - Locate Fiber Optic Mini-Duct
- Plumbing Applications - Fiberglass Will Not Rust
- Trace Sewer Laterals To Avoid Cross Bores
- Handle And Lightweight Frame For Easy Transport
- 3/16" Rod Has 2.5" Bend Radius - 1/8" Rod Has 1.75" Bend Radius
- 3/16" Rod End Ferrule - Standard 1/4"-20 Thread
- 1/8" Rod End Ferrule - #10-32 Thread
- Includes Accessory Kit
- Dimensions: 22" X 17" X 7"



Duct Hunter	Rod Diameter	Length	Recommended Conduit Size
15-316-100	3/16"	100'	1/2" - 4"
15-316-150	3/16"	150'	1/2" - 4"
15-316-200	3/16"	200'	1/2" - 4"
15-316-250	3/16"	250'	1/2" - 4"
15-316-300	3/16"	300'	1/2" - 4"
15-18-100	1/8"	100'	1/2" - 1"
15-18-150	1/8"	150'	1/2" - 1"
15-18-200	1/8"	200'	1/2" - 1"



Accessory Kit Mounts on Canister's Frame For Easy Access

Accessories	
15-163	Flexible Leader with Ball Tip - Guides rod around bends, sweeps, misalignments and wires
15-146	End Ferrule Repair Kit - End Ferrule, Adhesive, Emery Cloth
15-140	Splice Repair Kit - Splice Ferrule, Adhesive, Shrink Tube, Emery Cloth
15-160	Pulling Eye - Attaches to end fitting of rod so pull line can be attached to rod
15-168	Sonde Adapter
15-360	End Ferrule
15-316-AK	3/16" Accessory Kit: Flexible Spring Leader Tip, End Ferrule, Splice Ferrule, Pulling Eye, Adhesive, Emery Cloth, Canvas Pouch
15-18-AK	1/8" Accessory Kit: Flexible Spring Leader Tip, End Ferrule, Splice Ferrule, Pulling Eye, Adhesive, Emery Cloth, Canvas Pouch



**Water Service Line Tracer Kit
Locate Live Water Lines Meter To Main**

Features fiberglass rod with tracer wire and Stuffing Box that does not leak water up to 125 PSI.

Use with transmitter and receiver to trace from above ground.

Trace service lines from the customer's meter to the main water line or to the home without interruption of service.

- Locate any plastic pipe without a tracer wire
- With an adapter, stuffing box can be attached to water pipe that was holding meter.
- Dimensions: 22" X 17" X 7"

**3/16"
OD ROD**



Accessory Kit Included with Service Line Tracer
Canvas Storage Bag, 3 Screws, 6 O-Rings, Rod Lubricant, Hex Key Driver, Adhesive, Replacement Bullet Tip



15-316-100-WL	3/16" X 100' Water Tracer Kit
15-316-150-WL	3/16" X 150' Water Tracer Kit
15-316-200-WL	3/16" X 200' Water Tracer Kit
15-316-250-WL	3/16" X 250' Water Tracer Kit
15-316-300-WL	3/16" X 300' Water Tracer Kit
Replacement Parts	
15-SB	Stuffing Box with Three Screws, Six O-Rings
15-316-SB-KIT	Accessory Kit with Stuffing Box
15-146-GW	Bullet Tip Repair Kit
15-146-GW-T	Tapered Bullet Tip Repair Kit
15-170-GW	O-Ring, 12 Pack
15-WIPE	Lubricated Wipes
15-172	Cap Screw for Stuffing Box, 3-Pack



Live Tracer Water Main

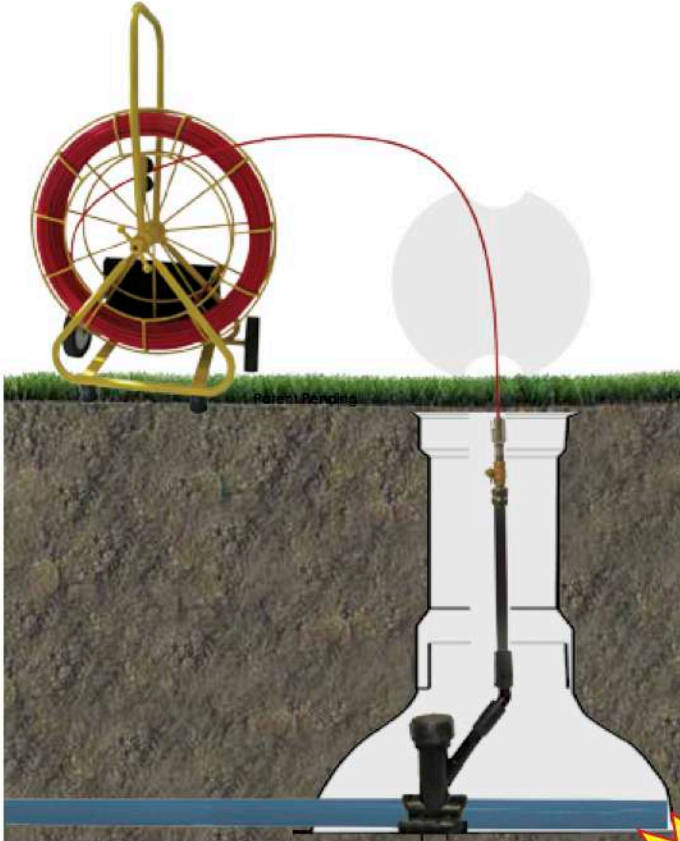
Traceable Rodder And Mechanical Vertical Insertion Saddle

Locate Live Plastic Water Mains

Traceable rodder features 1/4" fiberglass rod with tracer wire and stuffing box. Accessory kit mounts to rodder frame for easy access.

- Will Not Leak While Feeding Rod Into Live Main
- Trace Main From Above Ground With Transmitter & Receiver
- Less Disruption To Roads And Landscapes
- Minimal Pavement Breakage, Excavation And Restoration

For Tracing Non-Metallic Pipe



1/4"
OD ROD

250 PSI
Rating



Contact Our Customer Service Department
For Additional Information

Live Tracer®

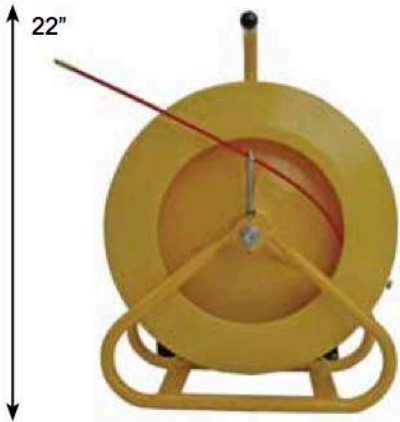
Gas Service Line Tracer Kit

Locate Live Plastic Lateral Gas Lines From Meter To Main

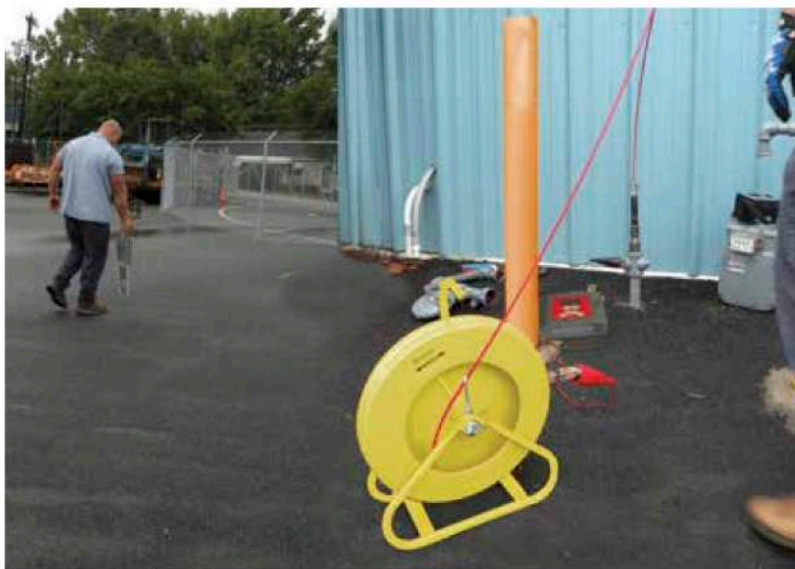
- Stuffing Box attaches to any riser with pipe reducer
- No blow-by while feeding rod into live line up to 125 PSI
- Small bullet tip guides rod from riser to lateral transition
- Use with transmitter & receiver to trace gas line from above ground
- Available with 1/8" rod to get past 90° elbow
- Dimensions: 22" X 17" X 7"

Field evaluated by GTI

**NO
Blow By To
125 PSI**



**3/16"
1/8"
OD ROD**



Lateral Gas Line Tracer Kit: Fiberglass Rod and Reel with Stuffing Box and Grounding

15-316-100-GL	3/16" X 100'
15-316-150-GL	3/16" X 150'
15-316-200-GL	3/16" X 200'
15-316-250-GL	3/16" X 250'
15-316-300-GL	3/16" X 300'
15-316-325-GL	3/16" X 325'
15-18-150-GL	1/8" X 150'
15-18-300-GL	1/8" X 300'

Replacement Parts

15-316-SB-KIT	Accessory Kit with Stuffing Box, 3/16"
15-SB	Stuffing Box 3/16", 3 Screws, 6 O-Rings
15-146-GW	Bullet Tip Repair Kit for 3/16"
15-146-GW-T	Tapered Tip for 3/16"
15-170-GW	O-Ring, 3/16", 12 Pack
15-WIPE	Lubricated Wipes
15-18-SB-KIT	Stuffing Box, 1/8"
15-18-146-GW	Bullet Tip Repair for 1/8"
15-18-170-GW	O-Rings, 1/8", 12-Pack

Contact Our Customer Service Department
For Additional Information



Locate Live Gas Mains With

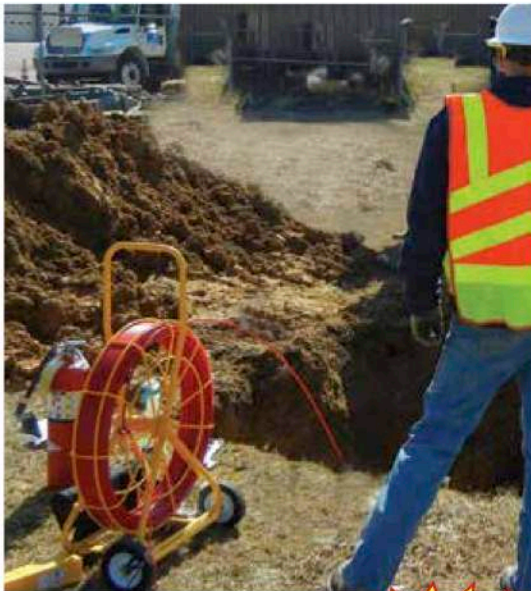
Electrofusion Or Mechanical Insertion Tee

Traceable rodder features 1/4" fiberglass rod with tracer wire and stuffing box. Use with transmitter and receiver to trace main from above ground.

Includes accessory kit that mounts to rodder frame for easy access:

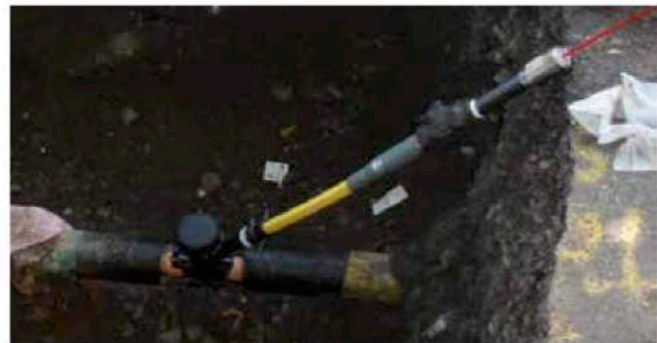
Stuffing Box, Grounding Cable With Clips, Screws, O-Rings, Rod Lubricant, Hex Key Driver, Adhesive, End Ferrule, Spring Leader, Canvas Storage Bag

- No Blow-By While Feeding Rod Into Live Main up to 125 PSI
- Trace Main From Above Ground
- Less Disruption To Roads And Landscapes
- Minimal Pavement Breakage, Excavation And Restoration
- Tees Available In Electrofusion or Mechanical To Meet Your Unique Needs



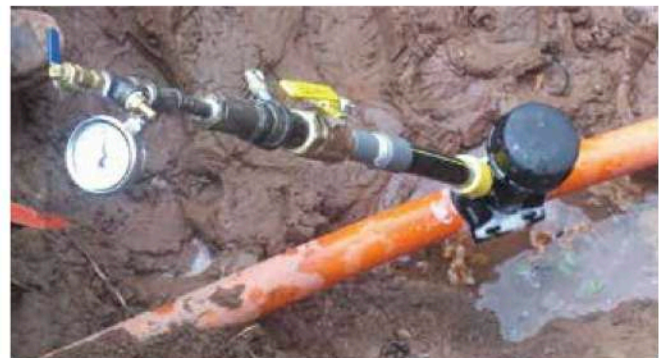
**1/4"
OD ROD**

**NO
Blow By To
125 PSI**



Insertion Tees For 2", 4", 6" Gas Mains

- Attach Stuffing Box To Electro-Fusion or Mechanical Insertion Tap Tee (*Patent Pending*)
- Insert Traceable Rod Into Main
- Use With Transmitter And Receiver To Trace Main From Above Ground



Part	Description
16-14-600-GL	Live Tracer for Gas Main: 1/4" X 600' Locating Rodder
16-2-TEE	2" IPS Electrofusion Insertion Tapping Tee with 1" IPS Port (4.7 mm resistor terminals)
16-4-TEE	4" IPS Electrofusion Insertion Tapping Tee
16-6-TEE	6" IPS Electrofusion Insertion Tapping Tee
16-2-TEE-M	Mechanical Saddle for 2" PVC Pipe
16-4-TEE-M	Mechanical Saddle for 4" PVC Pipe
16-6-TEE-M	Mechanical Saddle for 6" PVC Pipe
16-SB	Stuffing Box

Contact Our Customer Service Department For Additional Information About Accessories and Jameson's Certified Electrofusion Distributors



Part	Locators and Transmitter
17-100R	Wand Signal Receiver
17-100RTK	Wand Signal Receiver with Transmitter
17-300R	Cable and Pipe Receiver
17-300RTK	Cable and Pipe Receiver with Transmitter
17-500T	Transmitter

Wand Signal Receiver

Part Number 17-100R

Compact, lightweight locator for easy one-hand operation. LCD display and function keys are conveniently located on wand and easy to operate.

Ideal for short runs, locates energized conductive paths such as iron, steel and copper water lines, gas lines, tracer wire by plastic pipe, copper, telephone/TV cables and Jameson's Duct Hunter™ Traceable Rodders.

- 2 active frequencies
- 2 operating modes: Line tracing (82 kHz) and sonde locating (512 Hz).
- Includes carrying case, manual, batteries.

Cable & Pipe Signal Receiver

Part Number 17-300R

Ergonomic design for one-hand operation and highly visible display. Features depth indication with push of a button and back-lit LCD display.

Locate any energized conductive path - iron, steel and copper water lines, gas lines, tracer wire by plastic pipe, telephone/TV cables, copper and aluminum wire, conduit, power lines and Duct Hunter™ Traceable Rodders.

- 4 active frequencies: 512 Hz, 8 kHz, 33kHz, 82 kHz.
- 2 passive frequencies: 60 Hz power and RF
- Operating Modes: Peak, null and sonde
- Includes case, manual, conductive clips, batteries.

Transmitter

Part Number 17-500T

Digital transmitter energizes conductive paths and supports Jameson's receivers. Includes low frequencies for direct connect long runs, higher frequencies for tracing Duct Hunter™ rod in plastic pipes or inductive modes.

Lightweight unit with easy-to-read high contrast LCD screen.

Includes carrying case, manual, batteries, ground spike and wire leads.

Active frequencies: 512 Hz, 8 KHz, 33KHz & 82 KHz. 1 Watt Max.

Locate Underground Pipe

Use with Jameson's Buddy® Rodders and Fish Tapes or Duct Hunter™ Traceable Rodders to Locate in Underground Pipes or Conduit. Adapters attach rod to sonde.



Sonde #14-169



Little Buddy 3/16" Rod



Solid Adapter 10-170



Mini Duct Hunter 3/16" Rod
3/16" Rod Fits Sonde without Adapter



Easy Buddy 1/4" Rod



Solid Adapter 6-170



Good Buddy 3/8" Rod



Double Female 12-170



Solid Adapter 9-170



Big Buddy 1/2" Rod



Heavy Duty Flexible Adapter with Chain 9-169



Duct Hunter 5/16" Rod



Duct Hunter 7/16" Rod

Part Number	Adapters
10-170	Solid Adapter, Fits Sonde and 3/16" Little Buddy
6-170	Solid Adapter, Fits Sonde and 1/4" Easy Buddy Rod
12-170	Solid Double Female Adapter, Fits 3/8", 1/2", 5/16", 7/16" Rod and M-10 Male Sonde
9-170	Solid Adapter, Fits Sonde and 3/8", 1/2", 5/16", 7/16" Rod
9-171	Flexible Adapter with Roller Guide, Fits 3/8", 1/2", 5/16", 7/16" Rod
9-169-M10	Heavy Duty Flexible Adapter with Chain, 3/8-16, Fits Sondes with M10 Stud and Jameson's 3/8", 5/16", 7/16" and 1/2" Buddy Rodders
9-169	Heavy Duty Flexible Adapter with Chain, Fits 3/8" and 1/2" Buddy Rodders; 5/16" and 7/16" Duct Hunters
12-165	Kit: Sonde 14-169 and Adapter 9-169
14-169	Sonde, Operates at 512 HZ, 1/4-20 Female Thread. .12 lbs, 2.25" X .75"



9-171 Flexible Adapter with Roller Guide

Guides rod through bends in pipe and helps prevent breaking end of rod when inserting into pipe. Fits 3/8", 1/2", 5/16", 7/16"



12-165 Kit: Adapter 9-169 & Sonde 14-169



Sheave Designed To Protect ADSS Cable And Other Jacketed Fiber During Installation

- Spring loaded cable guard eliminates delays caused by cable and pull tape derailing. 2" Opening allows pulling grips to pass through easily
- Lightweight, reinforced polymer weighs significantly less than aluminum and steel models. Reduces installation fatigue, one-man set up
- Easy latching mechanism for single-handed operation
- High strength, impact resistant unit is more durable than aluminum
- Chemical, uv, corrosion resistant construction for longer life
- Electrically insulated* for safety
- Lift hoist swivels 360° and rotates 180° for unrestricted mounting and maneuverability

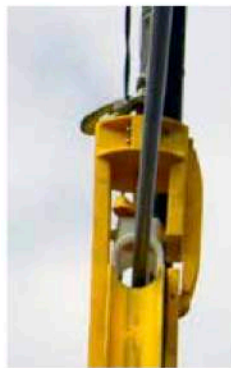
* 100 KV/Ft Dielectric Withstand Stainless Steel Fasteners

**Cable and Pull Tape Stay On Wheel
Levels Itself, Strapping Optional
Lightweight**

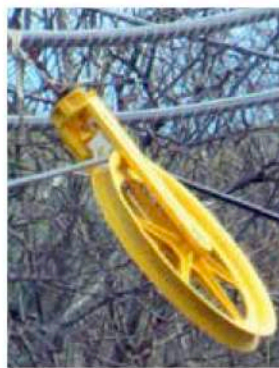
24" Model Weighs 40% Less Than Lightest Aluminum Model



8" Model For Straight Pulls
24" Model For Set Up, Take Down, Turns



Cable Capture Prevents Pull Table Or Cable Jumping Edge



Self Levels



Hook and Shackle Accessories

Specifications

24" Aerial Sheave:
Weight: 14 lbs. (6.35 kgs)
Maximum Load Rated for 1,600 lbs.

8" Aerial Sheave:
Weight: 8 lbs (3.63kgs)
Maximum Load Rated for 1,600 lbs.

SHV-8	8" Fiber Install Sheave
SHV-24	24" Fiber Install Sheave
SHV-HK	Slip Hook Accessory
SHV-SS	Safety Shackle Accessory

Making Cable Placement Easier

With guidance from professional linemen, Jameson developed cable placement tools for fiber optic and coaxial cable installation and maintenance. Working from the ground or in the air, our tools make cable construction easier and safer.

Corner Blocks

Corner blocks evenly distribute pressure on coax or fiber cable when pulling around corners. Steel side plates with straight base act as a strut for increased strength.

60 degree model offers more versatility than standard 45 degree blocks.

Steel side plates can be replaced in the field.

Nylon axle bushings provide easier swivel and longer axle life. Adjustable keeper arm holds cable in place as it is pulled through block.

Aluminum rollers reduce friction, preventing potential heat build up and damage to synthetic rollers.



90 Degree	60 Degree	Corner Blocks All Nylon Rollers
80-591	80-161	Corner Block - Single
80-592	80-162	Corner Block - Dual
80-594	80-164	Corner Block - Quad

90 Degree	60 Degree	Corner Blocks with One Row Aluminum Rollers
80-591A	80-161-A	Corner Block - Single

Pole Mount Brackets

Designed to save vertical space on crowded joint occupied poles, brackets are ideal for mounting corner blocks.

Nylon strap and ratchet make brackets easy to use and bracket is contoured to fit pole for maximum stability.

Ratchet strap will not damage existing cables and weighs less than chain straps. Can be adjusted to work from right or left hand side for convenient operation.



70-101
Use With Single Row Corner Block



70-102
Use With Dual Row Corner Block



70-104
Use With Quad Row Corner Block

Easy Rider™

Jameson overlash blocks are economical and lightweight, yet the high strength steel frame maintains cable alignment.

Easily snaps over a strand and cable package up to 2.25" in diameter. The 1.5" width provides convenient stacking when pushed by lasher.

Features a high, rounded bonnet to prevent block kicking under lasher. Stacks evenly. Non-binding roller axle allows rollers to "ride easily" and rotate smoothly.



90-400A
Easy Rider™ with Aluminum Roller



90-400
Easy Rider® with Nylon Roller

Versa™ Blocks

Versa™ Blocks offer the versatility of stringing cable at midspan on new and existing overlash construction.

Offers easy cable placement from aerial buckets or the ground when used with Jameson lay-up sticks and wire raising tool.

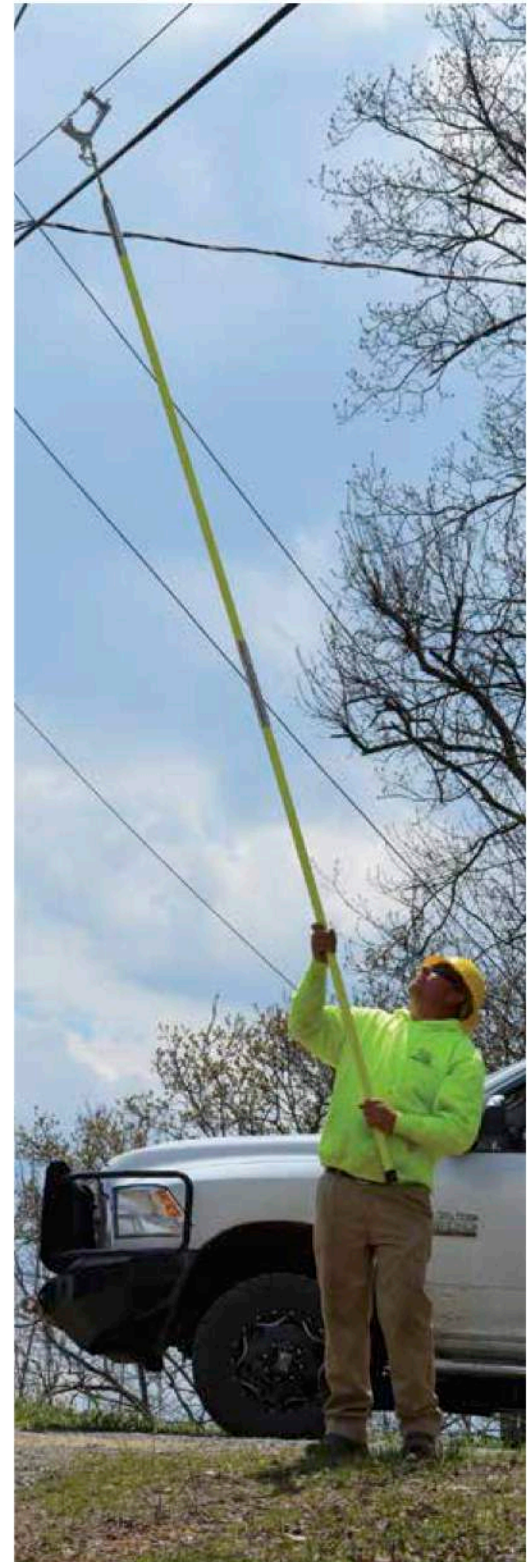
Low profile frame reduces cable damage as it passes through block and wide keeper arm accommodates large cable bundles when used as overlash block.



90-100
Versa™ Block with Rubber Roller
For up to 1.5" cables.



90-100A
Versa™ Block with Aluminum Roller
For up to 2.5" diameter cable or bundles and winch lines.



Pole Tag

For outside plant pole record systems.



Part Number	Aerial Tools
GTS2	Pole Tags for continuing property records



Easy Height Measurement

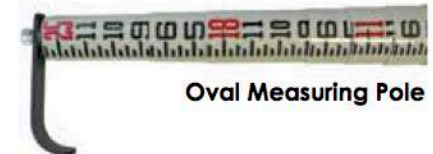
Fiberglass poles offer fast, accurate one-person measuring of height clearances and horizontal distances. All measuring poles include carry bag and removable hook accessory. Ideal for overhead lines, telecommunications, railroad, CATV, bridges and structures.



Round Measuring Pole

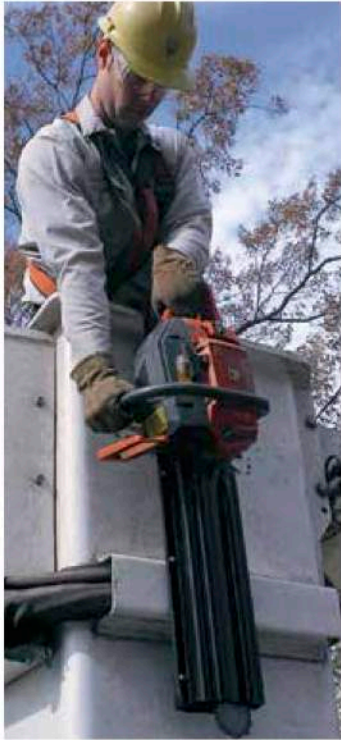


Rectangular Measuring Pole



Oval Measuring Pole

Part Number	Retracted Length	Telescoping Measuring Poles
TP-125M	52"	25' Round Telescoping Measuring Pole, 5-Lb, English & Metric
TP-136M	59"	36' Round Telescoping Measuring Pole, 7-Lb, English & Metric
TP-25MH	66"	25' Rectangular Measuring Pole, 7-Lb, English Measure Only. Rectangular for increased stiffness, maintenance of hole alignment
TP-125N	58"	25' Oval Telescoping Measuring Pole, 5-Lb, English Measure Only. Oval for easy grip.
TP-25HK		Replacement Hook for Measuring Pole



Safe, Convenient Storage

Jameson's heavy duty bucket mount tool holders offer safe, convenient storage for bucket truck tools.

Water repellent and UV resistant, holders withstand extreme weather conditions.



Adjustable clamp bracket allows tool holder to fit any size bucket, with or without liner, and mounts inside or outside bucket.



24-14L
Chainsaw Scabbard with Removable Liner
 Fits standard and hydraulic pistol grip chainsaws. Features a replaceable liner that protects scabbard from chainsaw heat and blade. Adjustable clamp bracket.



24-14A
Chainsaw Scabbard
 Fits standard and hydraulic pistol grip chainsaws. Adjustable clamp bracket



24-18
Fiberglass Chainsaw Holder
 Features high gloss gel coat finish to prevent fiberglass blooms and splinters. Fits standard and hydraulic pistol grip chainsaws. Adjustable clamp bracket.
24-18L With Removable Liner

24-23
Long Reach Chainsaw Holder
 Holds round and oval handled long reach chainsaws and gas powered pole pruners (standard and telescoping) for squirt boom trucks.
 Fixed mount. 18" X 13"



Part Number	Bucket Mount Tool Holders
24-14A	Chainsaw Scabbard
24-14L	Chainsaw Scabbard with Removable Liner
24-14LIN	Replacement Liner for 24-14L
24-18A	Fiberglass Chainsaw Holder
24-18L	Fiberglass Chainsaw Holder with Removable Liner
24-18LIN	Replacement Liner for 24-18L
24-23	Long Reach Chainsaw Holder - Fixed Mount



24-12A Impact Tool Holder
Features one-piece construction with adjustable clamp bracket. Accommodates most wrenches and drills.

24-12AH Impact Tool Holder with Scabbard
Expanded opening accommodates the most common wrenches and drills. Features two spare drill bit holders and adjustable clamp bracket.



24-15D Double Pocket Tool Holder
Inner pocket measures 6.25" X 2.25" X 17". Outer pocket measures 5.25" X 12.5" X 15". Accommodates a variety of tools. Drain holes for moisture escape.



24-25 Tool Board
Leather tool pouches and drop-in loops. Fixed bucket mount. 22.5" X 18"



24-17 Tool Tray
Features removable dividers and fixed bucket mounts. 23" X 14" X 8"

Part Number	Bucket Mount Tool Holders
24-12A	Impact Tool Holder
24-12AH	Impact Tool Holder with Scabbard
24-15D	Double Pocket Tool Holder
24-17	Tool Tray
24-25	Tool Board with Leather Tool Pouches



Store Tools Outside The Bucket

Take the tools out of the bucket and mount them on the boom for safe, convenient access. Made from high impact plastic, Jameson's boom-mount tool holders can be strapped to round or square booms.



24-02 Circular Saw Holder
12" X 9"



24-04 Hydraulic Pruner Holder
12" X 13"



Long Reach Chainsaw Holder
24-03F Fits Greenlee Fairmont Style Long Reach Chainsaw
32" X 5"



Boom Guard (24-03GUARD)
Protects boom from saw damage. Mount on boom in front of tool holder to avoid damaging boom when inserting tool into holder.
32" X 5"



24-09R Nylon Strap with Ratchet



24-08R Handle

Handle Unit For Boom Mount Tool Holders

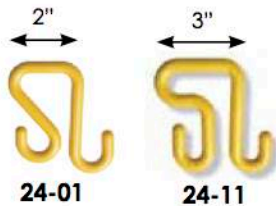
All boom mount tool holders include the Jameson Handle Unit. This web strap and ratchet lock clamp fasten the hydraulic tool securely into a fixed position on the boom. Its rubberized liner prevents the tool handle from sliding out of the upper holder box. Fits round and square booms.

Part Number	Boom Mount Tool Holders
24-02	Circular Saw Holder with Locking Straps & Handle
24-04	Hydraulic Pruner Holder with Locking Straps & Handle
24-03F	Long Reach Chainsaw Holder with Locking Straps & Handle <i>Fits Greenlee Fairmont</i>
24-03GUARD	Boom Guard
Replacement Parts	
24-04R	Replacement Handle Unit (Handle, Strap & Ratchet)
24-08R	Handle Only
24-09R	5' Nylon Strap with Ratchet
24-02B	Saw Box with Strap & Ratchet
24-03B	Chainsaw Box with Strap & Ratchet
24-04B	Pruner Box with Strap & Ratchet

Store and Organize Small Tools

Jameson tool bags feature reinforced sides and base to prevent sagging or water retention.

Available with inner and/or outer organizer pockets, bags can be mounted from the bucket with a rope hook or one of Jameson's high strength polymer "S" hooks.



S-Hooks attach canvas bags to aerial bucket lip. Molded from rugged, weather resistant polymer.



24-41 Bag Only
24-41S Bag & Two S Hooks
 15 Outside Pockets, Rope with Swivel Hook, Reinforced Hard Plastic Base, 2 Grommets for S Hooks 15" X 7" X 10"



24-40 Bag Only
 15 Inside Pockets, 2 Grommets for Hooks 15" X 7" X 10"



24-40S Bag & Two S-Hooks
 15 Inside Pockets, 2 Grommets for Hooks 15" X 7" X 10"



24-42 Bag Only
24-42S Bag & Two S Hooks
 13 Outside Pockets, Web Handles 2 Grommets for S Hooks 15" X 7" X 10"



STUBBY LIGHT®

Compact, High Intensity Fluorescent Lighting For Small Workspaces

Twin fluorescent lamps are protected by patented bulb sockets, end caps and handles designed to absorb impact in addition to a shatterproof tube.

Electronic ballast technology offers:

- Eliminates cumbersome starter canisters
- Reduced heat output
- Flicker free lighting
- Does not interfere with tone test equipment

Meets ASTM specifications for water resistance.



Part Number	Stubby Light® 110 Volt Lights	Power Cord Length	Weight (Lbs)
31-1325E	13 Watt	25'	2.7
31-1350E	13 Watt	50'	4.5
31-2425E	24 Watt	25'	3.6
31-2450E	24 Watt	50'	5.3
31-3625E	36 Watt	25'	4.0
31-3650E	36 Watt	50'	5.8
31-5025E	50 Watt	25'	4.2
31-5050E	50 Watt	50'	5.9



Two large, flexible hanging hooks come standard on 50, 36 and 24 watt lights. 13 watt light has one hanging hook.

12 Volt Stubby® Light

Fluorescent Battery Powered Light

Ideal for emergency applications when power is not available; equipment rooms or basements where water is a concern; utility and supervisor vehicles.

- 13 Watt Stubby Light® with 10' coiled cord and plug adapter
- Operates off battery pack or direct 12 volt power source
- Battery Pack features "Smart Charger" that prevents overcharging
- Battery housed in nylon pouch on adjustable belt



Part Number	Rechargeable Battery Pack Light
31-131012VCC	13 Watt Light with 10' Coil Cord and Plug Adapter
31-BP-SC	12 Volt, 7.4 Ah Battery Pack with 110V Charger. Operates light 7 hours
31-1310-BP-SC	13 Watt Light with 7.4 Ah Battery Pack (31-BP-SC)

Bright, Durable Fluorescent Lighting

Single fluorescent lamp is protected by patented bulb sockets, end caps and handles designed to absorb impact in addition to a shatterproof tube.

Electronic ballast technology offers:

- Eliminates cumbersome starter canisters
- Reduced heat output
- Flicker free lighting
- Does not interfere with tone test equipment

Handi-light®

Meets ASTM specifications for water resistance.



Two large, flexible hanging hooks come standard on all Handi-light models

Part Number	Handi-Light® 110 Volt Lights	Power Cord Length	Weight (Lbs)
30-1525E	15 Watt, 110 Volt	25'	3.3
30-1550E	15 Watt, 110 Volt	50'	5.1
30-3025E	30 Watt, 110 Volt	25'	4.1
30-3050E	30 Watt, 110 Volt	50'	6.0
30-4025E	40 Watt, 110 Volt	25'	6.6
30-4050E	40 Watt, 110 Volt	50'	8.7

Stubby® and Handi-Light® Accessories

Inverter

Operates light off vehicle's 12 Volt DC power source



Vinyl Carry Bag

Protects and transports light



Part Number	Accessories
23-15	29" Vinyl Carry Bag
23-30	46" Vinyl Carry Bag
23-40	60" Vinyl Carry Bag
29-01	12 Volt DC Inverter



LED Light, 12 Volt

8 Watt
 12 VDC (5-14 VDC Range)
 10' Heavy Duty Coil Cord with Plug Adapter for use with Jameson Battery Pack or Vehicle Power Source.
 Light: 15" X 3.25"

LED Light, AC Powered

10 Watt
 120 - 240 VAC, 50/60 Hz
 Light: 15" X 3.25"



LED Handheld Work Light

To meet the demand for greener lighting, Jameson developed LED work lights with the same design durability of our fluorescent models. LED technology offers reduced power consumption and a longer life.

- Compact design
- Convenient flexible hanging hook.
- Shock-absorbing handle and end cap combined with shatter proof tube shield for rugged durability.

Part Number	LED Work Lights
31-825-LED	LED Light, AC Powered, 25' Power Cord
31-850-LED	LED Light, AC Powered, 50' Power Cord
31-12VDC-LED	LED Light, 12 Volt
31-BP-LED-12VDC	Kit: 12 Volt Light with Battery Pack

LED Flashlight

With 12 LEDs, this compact flashlight is weatherproof and shock resistant.

- Flat base allows flashlight to be set on end for hands-free operation
- Operates on three AAA batteries (included)
- 4.5" X 3.75"



Flashlight
31-FL-10

Pouch
31-FL-10P

Stringable Shelter Lights



Stringable Lighting

Ideal for emergency, first responder, military or new construction applications that require portable lighting.

Use an individual light to illuminate a confined space or string lights together to illuminate a larger area.

STRING LIGHT

Part Number	String Lights and Accessories
31-5004M-IP	General Purpose String Light, 110 Volt, Hanging Straps
31-501-US	Multi-Volt String Light, 110-230 Volt, Hanging Straps
31-400B	LED String Light
23-30-B	Vinyl Carry Bag - Holds 2 Lights
31-MC	Transport Case - Holds 4 Lights

Specialized military lights available.
 Contact our customer service department to request a Military Lighting Catalog

Tripod Wide Area Light

Featuring three light heads with 48 total LEDs, the Cero Tripod Light offers intense, adjustable area lighting.

The 3 light heads offer 360° tilt and rotation to provide lighting for a variety of applications.

The adjustable tripod folds to a compact 59" height for convenient storage.

Available with heavy duty transport case.

Light Head Features:

- 16 LEDs Per Light Head
- Low Power Consumption, Long Life LEDs
- Water, Impact, And Shatter Resistant
- Housing Is Anodized Aluminum For Corrosion Protection (Mil-A-8625)
- Instant On
- Flicker Free
- Nema 4X Rated
- Retractable Coiled Cables
- 50' Power Cord



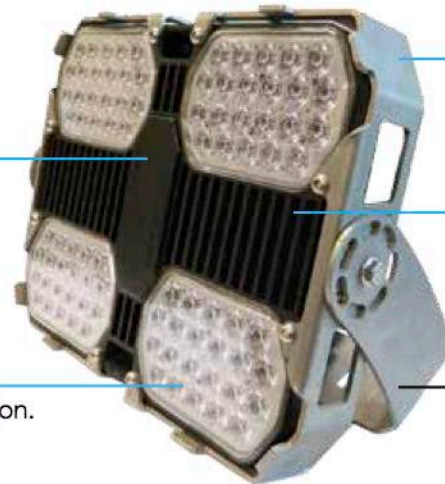
Part Number	Description
31-WA-3HD16-TR	Wide Area LED Light with Tripod
31-WA-3HD16-TR-C	Wide Area LED Light with Tripod in Transport/Storage Case
31-WA-3HD16-TR-B	Wide Area LED Light with Tripod in Storage Bag
31-ANCHOR KIT	Set of 3 Sand Bags and 3 Leg Stakes
31-WA-CASE	Transport Case Only for Wide Area LED Light
31-WA-BAG	Storage Bag Only for Wide Area LED Light

Specifications - Lights	
Power	160 Watts
Input Voltage	90-264 VAC
Effective Lumens	16,500
Weight Per Light Head	3.5 Lbs Each
Operating Temperature	-40° C to 50° C
Input	1 (Power In)
Output	3 (One Per Light)
Individual Light Head Dimensions	4.5" X 4.5" X 2.7" (114mm X 114mm X 68.58)
Cable Length	50'
Plug	NEMA 5-15
Specifications - Tripod	
Height	5' to 10' (Collapsed-Extended)
Base Wide	13" - 58" (Collapsed-Extended)
Support	3 - 15 Lb Sand Bags (Sold Separately) or Can Be Staked Into Ground
Material	Aluminum, Powder Coated
Bar Mount	Quick Release Pins - Removable for Storage
Folded Dimensions	59.0" X 13.0" X 13.0"
Lights and Transport Case	
Tripod Light Without Case	40 Lbs
Light and Case Weight	88 Lbs
Transport Case	66.5" X 22" X 12.5"

ExoStar Area Light Large Perimeter Lighting

- 88 LEDs
- Illuminates Large Perimeter
- 360 Degree Rotation
- Coated Aluminum Housing for Corrosion Protection
- Corrosion Resistant Stainless Steel Bracket and Hardware
- Superior Hot and Cold Temperature Performance
- Tripod Mounting Available
- 8-Zone Thermal Management

**LED Light Towers - Shovels - Draglines - Marine Vessels
High Bay Interiors**



Onboard AC Conversion

Lower weight, improved efficiency, and easier integration.

Primary and Secondary Optics

High efficiency collimating and dispersion.

Exo-Skeleton

Increases durability on HD models without increased weight on SD models.

Heat Sink

Thin profile reduces weight and cost while maximizing cooling. Allows for downward aiming without a loss in performance.

HD Swivel Bracket

360° of rotation from single bracket.

Part Numbers and Options - Exostar Light Head Only

Use chart to identify part number built to your specifications. Example: part number **SD88D300ACNNDW**
Standard with 88 LEDs, Deutsch Connection, 300 Watts, AC, Natural Color, Nylon Lens, Double Trunnion Mount, Wide Beam Pattern

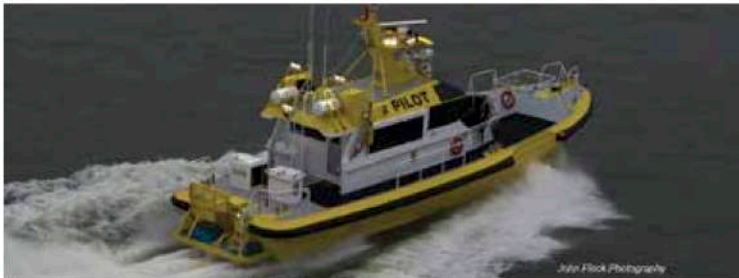
SD	88	D	300	AC	N	N	D	W																					
Duty	LEDs	Connection		Power	Input Voltage		LED Color		Lens		Mount Style		Beam Pattern																
SD	Standard: No Outer Frame	88	D	Deutsch	300	AC	90-264VAC	N	Natural 5000K	N	Nylon Plastic	D	Double Trunnion	W	Wide (53°)														
HD	Heavy: With Outer Frame		M	Mil-Spec Circular		DC	15-50VDC							S	Spot (9°)														
			A	Amphenol Eco-Mate	<table border="1"> <thead> <tr> <th colspan="2">Specifications</th> </tr> </thead> <tbody> <tr> <td>Power</td> <td>300W</td> </tr> <tr> <td>Operating Voltage</td> <td>90-264VAC or 15-50VDC</td> </tr> <tr> <td>Actual Lumens</td> <td>53° Wide: 21,425 9° Spot: 20,025</td> </tr> <tr> <td>Weight</td> <td>21 lbs. (SD Version) 27 lbs. (HD Version)</td> </tr> <tr> <td>Operating Temperature</td> <td>-40° C to 50° C</td> </tr> <tr> <td>Dimensions</td> <td>18" X 15.5" X 6.4"</td> </tr> </tbody> </table>											Specifications		Power	300W	Operating Voltage	90-264VAC or 15-50VDC	Actual Lumens	53° Wide: 21,425 9° Spot: 20,025	Weight	21 lbs. (SD Version) 27 lbs. (HD Version)	Operating Temperature	-40° C to 50° C	Dimensions	18" X 15.5" X 6.4"
Specifications																													
Power	300W																												
Operating Voltage	90-264VAC or 15-50VDC																												
Actual Lumens	53° Wide: 21,425 9° Spot: 20,025																												
Weight	21 lbs. (SD Version) 27 lbs. (HD Version)																												
Operating Temperature	-40° C to 50° C																												
Dimensions	18" X 15.5" X 6.4"																												
			N	Nema 5-15 Plug, 25-Ft																									
			S	Short Blank Cable, 6-Ft																									
			L	Long Blank Cable, 25-Ft																									

For Custom Configurations,
Contact Customer Service

Mining - Construction - Marine - Agriculture - Heavy Equipment - Wide Area

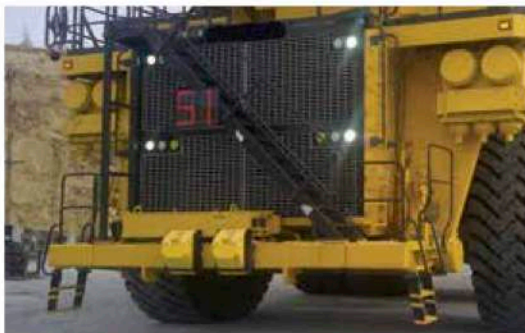


CERO.



IDXD Compact Extreme Duty Lighting With Shock Handling Capabilities

- LED Technology
- Extreme Vibration Durability And Shock Handling For Heavy Equipment and Marine Applications
- Direct Replacement For Most Standard Equipment
- Versatile Mounting
- Anodized Aluminum for Corrosion Protection
- Corrosion Resistant Stainless Steel Mounting Bracket and Hardware



IDX Alpha Numeric Identification Displays

Equipment identification impacts safety, requiring clear communication of characters. Cero IDX display characters are 18" in height for high visibility.

To prevent visual blending with adjacent characters, additional character segments were added to center the number "1."

Displays are easy to change with high-power magnet included with unit.

Available Numeric and Alpha Characters
 Numbers: 1, 2, 3, 4, 5, 6, 7, 8, 9, 0
 Alphabet: A, b, C, d, E, F, M, H, I, J, L, O, P, S, T, U



ML High Visibility Indicator Lamp For Off Road

ML indicator lamps penetrate thick layers of dust or mud buildup, fog, snow, and rain. Features high-low brightness in a compact 5.2" X 3.6" X .90".

Contact Jameson's Customer Service Department For Assistance With Specific Applications Or Customized Lighting
 Request Jameson's Cero Lighting Catalog

Part Number	Product Group	Replacement Part
24-02B	Bucket Boom	Saw Box and Lock/Strap
24-04R	Bucket Boom	Replacement Handle With Strap, Ratchet for Boom Tool Holder
24-08R	Bucket Boom	Handle Only for Boom Tool Holders
24-09R	Bucket Boom	Nylon 5' Strap with Ratchet
10-150RO	Buddy Fish Tape	Little Buddy - Rod Only 3/16" X 150'
10-18-350MDRO	Buddy Fish Tape	Microduct 350' X 1/8" Rod Only
10-200RO	Buddy Fish Tape	Little Buddy - Rod Only 3/16" X 200'
10-300RO	Buddy Fish Tape	Little Buddy - Rod Only 3/16" X 300'
11-10	Buddy Rodder	Big Buddy Rod End Clamp
11-1000ROM	Buddy Rodder	Big Buddy - Rod Only 1/2" X 1000'
11-100ROM	Buddy Rodder	Big Buddy - Rod Only 1/2" X 100'
11-15	Buddy Rodder	Big Buddy - Wheel & Axle
11-2	Buddy Rodder	Big Buddy Replacement Reel
11-200ROM	Buddy Rodder	Big Buddy - Rod Only 1/2" X 200'
11-38-RI	Buddy Rodder	Big Buddy Frame and Canister
11-5	Buddy Rodder	Big Buddy Feed Roller Kit
11-500ROM	Buddy Rodder	Big Buddy - Rod Only 1/2" X 500'
11-600ROM	Buddy Rodder	Big Buddy - Rod Only 1/2" X 600'
11-800ROM	Buddy Rodder	Big Buddy - Rod Only 1/2" X 800'
11A-15	Buddy Rodder	Good Buddy II Wheel and Axle Kit
11A-2	Buddy Rodder	Good Buddy II Replacement Reel
11A-25-RI	Buddy Rodder	Good Buddy II Frame and Canister
6-14-RI	Buddy Rodder	Easy Buddy Frame & Reel
6-15	Buddy Rodder	Easy Buddy Wheels and Axle
6-300ROM	Buddy Rodder	Easy Buddy - Rod Only 1/4" X 300'
6-400ROM	Buddy Rodder	Easy Buddy - Rod Only 1/4" X 400'
6-5	Buddy Rodder	Feed Roller for Easy Buddy
6-500ROM	Buddy Rodder	Easy Buddy - Rod Only 1/4" X 500'
9-100ROM	Buddy Rodder	Good Buddy - Rod Only 3/8" X 100'
9-2	Buddy Rodder	Good Buddy Replacement Reel
9-25-RI	Buddy Rodder	Good Buddy Frame and Canister
9-300ROM	Buddy Rodder	Good Buddy - Rod Only 3/8" X 300'
9-400ROM	Buddy Rodder	Good Buddy - Rod Only 3/8" X 400'
9-500ROM	Buddy Rodder	Good Buddy - Rod Only 3/8" X 500'
15-200RO	Duct Hunter Fisher	Mini Rod Only 3/16" X 200'
15-250RO	Duct Hunter Fisher	Mini DH Rod Only 3/16" X 250'
15-300RO	Duct Hunter Fisher	Mini DH Rod Only 3/16" X 300'
9-600ROM	Buddy Rodder	Good Buddy - Rod Only 3/8" X 600'
9A-15	Buddy Rodder	Good Buddy III Wheel and Axle Kit
9A-25-RI	Buddy Rodder	Good Buddy III Frame Assembly
9-ACA	Buddy Rodder	Good Buddy III Axle Assembly
9-LAK	Buddy Rodder	Good Buddy Legs and Axle Kit
15-100RO	Duct Hunter Fisher	Mini DH Rod Only 3/16" X 100'
15-150RO	Duct Hunter Fisher	Mini DH Rod Only 3/16" X 150'
15-200RO	Duct Hunter Fisher	Mini DH Rod Only 3/16" X 200'
15-250RO	Duct Hunter Fisher	Mini DH Rod Only 3/16" X 250'
15-300RO	Duct Hunter Fisher	Mini DH Rod Only 3/16" X 300'

Part Number	Product Group	Replacement Part
12-150RO	Duct Hunter Rodder	Duct Hunter Rod Only 150' X 5/16"
12-300RO	Duct Hunter Rodder	Duct Hunter Rod Only 300' X 5/16"
12-300ROM	Duct Hunter Rodder	Duct Hunter Rod Only Marked 300' X 5/16"
12-400RO	Duct Hunter Rodder	Duct Hunter Rod Only 400' X 5/16"
12-400ROM	Duct Hunter Rodder	Duct Hunter Rod Only Marked 400' X 5/16"
12-500RO	Duct Hunter Rodder	Duct Hunter Rod Only 500' X 5/16"
12-500ROM	Duct Hunter Rodder	Duct Hunter Rod Only Marked 500' X 5/16"
12-600RO	Duct Hunter Rodder	Duct Hunter Rod Only 600' X 5/16"
12-600ROM	Duct Hunter Rodder	Duct Hunter Rod Only Marked 600' X 5/16"
12-700RO	Duct Hunter Rodder	Duct Hunter Rod Only 700' X 5/16"
12-700ROM	Duct Hunter Rodder	Duct Hunter Rod Only Marked 700' X 5/16"
12-800RO	Duct Hunter Rodder	Duct Hunter Rod Only 800' X 5/16"
12-800ROM	Duct Hunter Rodder	Duct Hunter Rod Only Marked 800' X 5/16"
13-400RO	Duct Hunter Rodder	Duct Hunter Rod Only 400' X 7/16"
13-400ROM	Duct Hunter Rodder	Duct Hunter Rod Only Marked 400' X 7/16"
13-500RO	Duct Hunter Rodder	Duct Hunter Rod Only 500' X 7/16"
13-500ROM	Duct Hunter Rodder	Duct Hunter Rod Only Marked 500' X 7/16"
13-600RO	Duct Hunter Rodder	Duct Hunter Rod Only 600' X 7/16"
13-600ROM	Duct Hunter Rodder	Duct Hunter Rod Only Marked 600' X 7/16"
13-700RO	Duct Hunter Rodder	Duct Hunter Rod Only 700' X 7/16"
13-700ROM	Duct Hunter Rodder	Duct Hunter Rod Only Marked 700' X 7/16"
13-800RO	Duct Hunter Rodder	Duct Hunter Rod Only 800' X 7/16"
13-800ROM	Duct Hunter Rodder	Duct Hunter Rod Only Marked 800' X 7/16"
30-1-15	Lighting	15 Watt Replacement Lamp Kit
30-1-15-PKG	Lighting	15 Watt Replacement Kit, 6 Pack
30-1-30	Lighting	30 Watt Replacement Lamp Kit
30-1-30-PKG	Lighting	30 Watt Replacement Kit, 6 Pack
30-1-40	Lighting	40 Watt Replacement Lamp Kit
30-2-30	Lighting	30 Watt Tube and Label Kit
30-2-40	Lighting	40 Watt Tube and Label Kit
31-1-13	Lighting	13 Watt Replacement Lamp Kit
31-1-13-PKG	Lighting	13 Watt Replacement Kit, 6 Pack
31-1-24	Lighting	24 Watt Replacement Lamp Kit
31-1-24-PKG	Lighting	24 Watt Replacement Kit, 6 Pack
31-1-36	Lighting	36 Watt Replacement Lamp Kit
31-1-36-PKG	Lighting	36 Watt Replacement Kit 6 Pack
31-1-50	Lighting	50 Watt Replacement Lamp Kit
31-1-50-PKG	Lighting	50 Watt Replacement Kit 6 Pack
31-1-36-PKG	Lighting	36 Watt Replacement Kit 6 Pack
31-1-50	Lighting	50 Watt Replacement Lamp Kit
31-1-50-PKG	Lighting	50 Watt Replacement Kit 6 Pack

Part Number	Product Group	Replacement Part
31-2-13	Lighting	13 Watt Tube and Label Kit
31-2-24	Lighting	24 Watt Tube and Label Kit
31-2-36	Lighting	36 Watt Tube and Label Kit
31-2-50	Lighting	50 Watt Tube and Label Kit
31-RHK	Lighting	Light Hanger Hook Kit
15-100RO-GW	Live Tracer	Gas, Water Tracer Rod Only 3/16"X100'
15-150RO-GW	Live Tracer	Gas, Water Tracer Rod Only 3/16"X150'
15-170-GL	Live Tracer	Stuffing Box O-Rings (12 pack)
15-200RO-GW	Live Tracer	Gas, Water Tracer Rod Only 3/16"X200'
15-250RO-GW	Live Tracer	Gas, Water Tracer Rod Only 3/16"X250'
15-300RO-GW	Live Tracer	Gas, Water Tracer Rod Only 3/16"X300'
PS-RP-LF	Pole Saws	PS-3 Hardware - Lower/Centered-10 PK
PS-RP-LP	Pole Saws	PS-3 Hardware - Lower Pin-10 PK
PS-RP-U	Pole Saws	PS-3 Hardware - Upper-10 PK
FG-F	Poles	Female Ferrule with Spring
FG-M	Poles	Male Ferrule for 1-1/4" Poles
FG-MF	Poles	Set of Ferrules - Male & Female
FG-SC	Poles	Spring and Clip for Ferrule
PHA-34DP	Pruners - JA	Adapter for Big Mouth Double Pulley Pruner. Adapter includes pulley.
JAY102	Pruners - JA	JA-14 Pruner - Lever w/Lower Spring Pin
JAY104R	Pruners - JA	JA-14 Pruner - Casting
JAYY101A	Pruners - JA	JA-14 Pruner - JHook
JAZ101	Pruners - JA	JA-14 Pruner - Blade with Upper Pin
JAZ103	Pruners - JA	JA-14 Pruner - Link
JAZ104	Pruners - JA	JA-14 Pruner - Spring
JAZ105	Pruners - JA	JA-14 Pruner - Cap Screw & Nut
JAZ106	Pruners - JA	JA-14 Pruner - Upper Spring Pin
JAZ108	Pruners - JA	JA-14 Pruner - Link Pin
JAZ110	Pruners - JA	JA-14 Pruner - Lower Spring Pin/2 Rings
JAZ111A	Pruners - JA	JA-14 Pruner - Lever Block
JAZ114	Pruners - JA	JA-14 Pruner - Lever Nut
JAZ115	Pruners - JA	JA-14 Pruner - Pulley Assembly
JAZ115S	Pruners - JA	JA-14S Pulley Assembly - Swivel

Part Number	Product Group	Replacement Part
JAZ116	Pruners - JA	JA-14 Pruner - Pulley Trunnion Pin
JAZ117A	Pruners - JA	JA-14 Pruner - Pole Bolt & Nut
JAZ123	Pruners - JA	JA-14 Pruner - Blade Bolt Nut, Nylon Ins
JAZ124	Pruners - JA	JA-14 Pruner - Block Bolt & Nut
JAZ130	Pruners - JA	JA-14 Pruner - Rivet
JBM101	Pruners - JA	JA-34 Pruner - Blade
JBM102	Pruners - JA	JA-34 Blade Bolt
JBM104	Pruners - JA	JA-34 Pruner - Spring
JBM106A	Pruners - JA	JA-14 Pruner Spring Pin Kit: Pin & Nut, Upper
JBM108	Pruners - JA	JA-34 Pruner - Link Pin
JBM110	Pruners - JA	JA-34 Pruner - Lower Spring Pin
JE-F	Pruners - JA	Female Ferrule And Leaf Spring
JE-M	Pruners - JA	Male Ferrule With Screw & Nut
PHA-34DP	Pruners - JA	JA-34DP Pruner Adapter

GBT Global



STUBBY
LIGHT

STUBBY
LIGHT® LED

Handi-light®

STRING LIGHT

CERO

Inside Wiring - Underground Cabling and Locating - Aerial Cable Placement - Tree Care - Lighting

